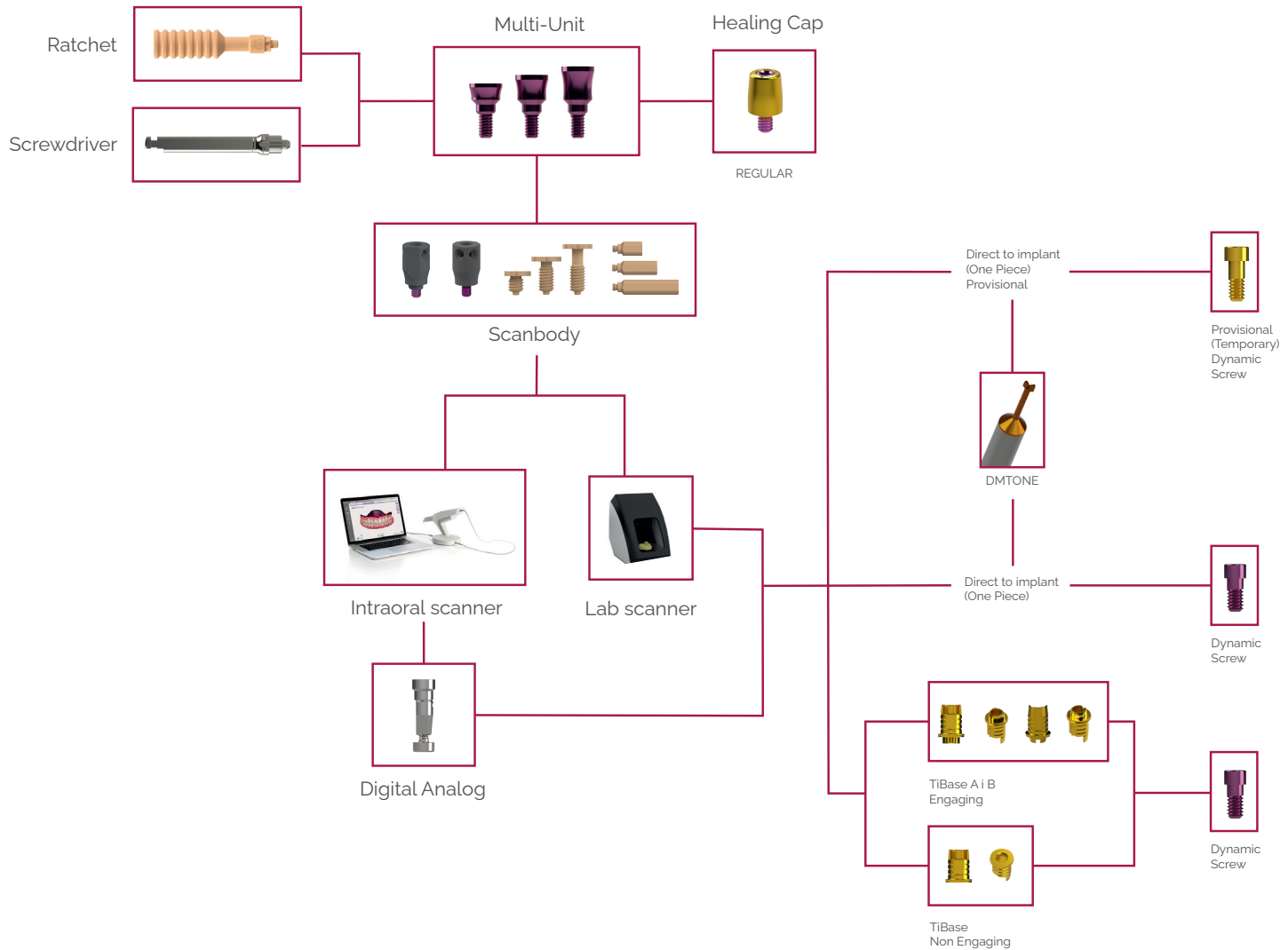


INTERNAL DAS MU

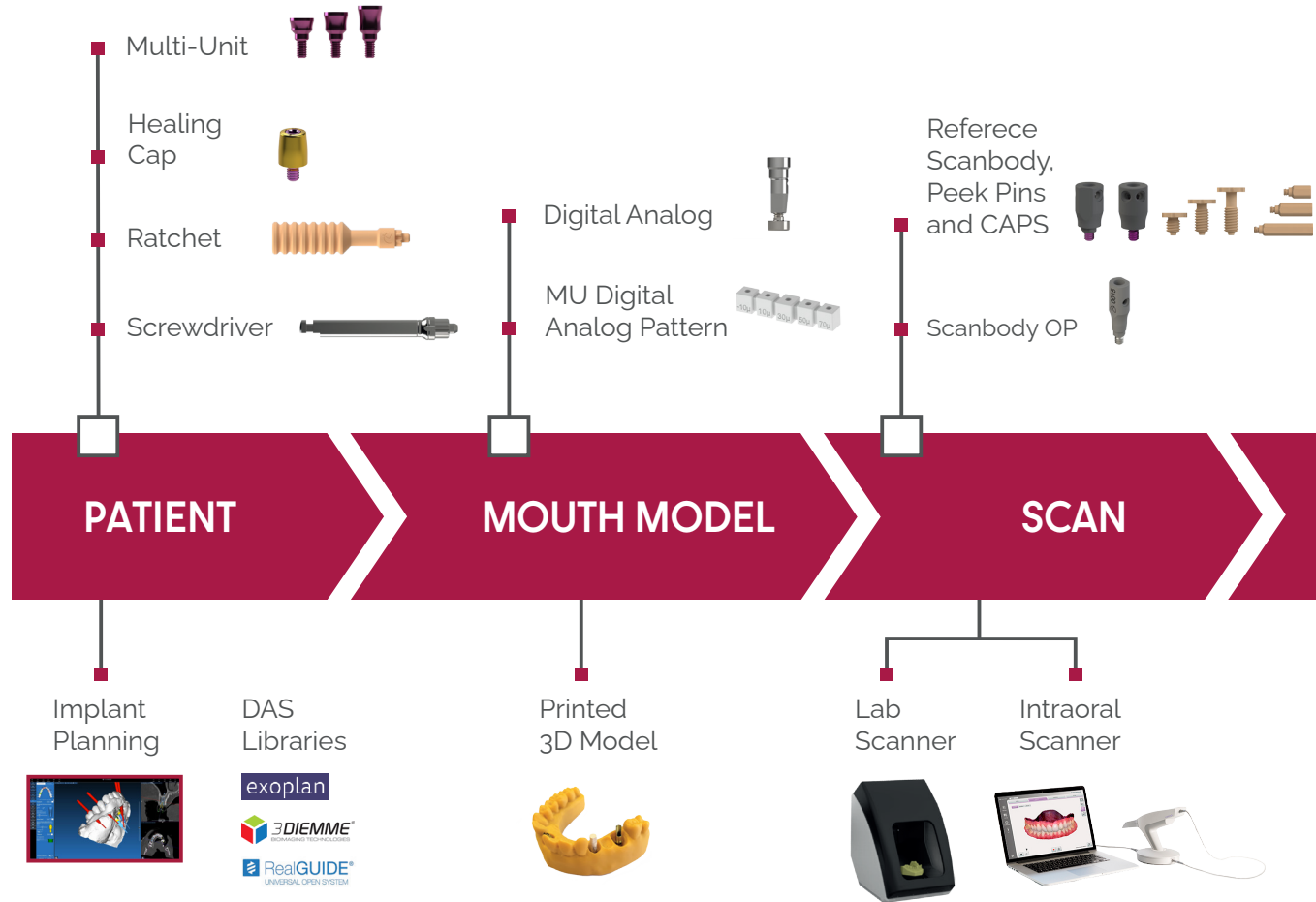


INTERNAL MULTI-UNIT DAS SYSTEM





MULTI-UNIT WORKFLOW



Dynamic
TiBase A i B
Engaging



TiBase
Non Engaging



Direct to Implant
(One Piece)
Provisional



Direct to Implant
(One Piece)



DMTONE



CAD Services



CAM Strategies



MU TiBase
Pattern



Dynamic Screwdriver
Dynamic Screw
Provisional Dynamic Screw



Dynamic TiBase



Direct to Implant
(One Piece)
Provisional



Direct to Implant
(One Piece)
Final Structure



DESIGN

MILLING

FINAL STRUCTURE

CAD
Design



DAS
Libraries



Milling
CAM



DAS Tested
CAM Software

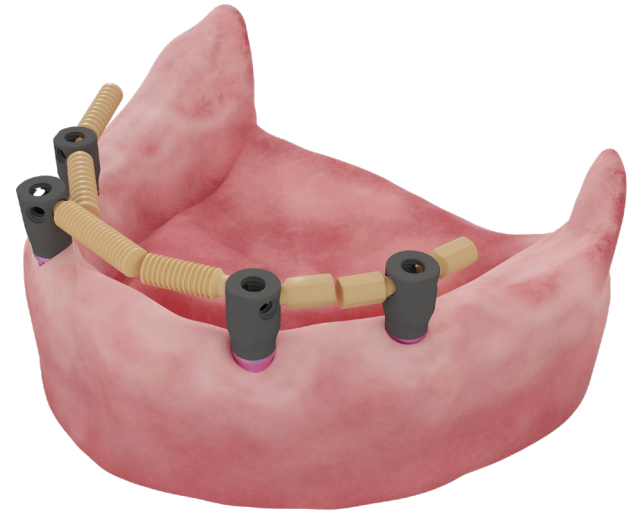
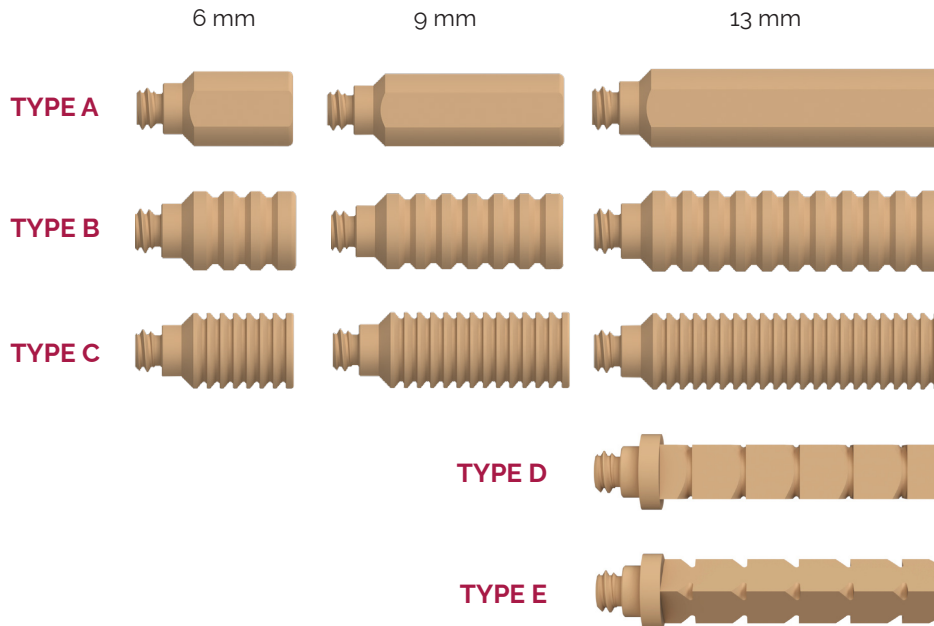


REFERENCE SCANBODY & PEEK PINS

The Reference Scanbody is made of titanium and is designed to improve scanning for **edentulous cases**.

- Peek Pins can be used for **best scanning**
- The Reference Scanbody is compatible with different **Multi-Unit**

Peek Pins lengths



Reference Scanbody



NR = Engaging

R = Non Engaging

CAPS COMPLETE ARCH PILLAR SYSTEM

The Complete Arch Pillar System (CAPS) is made to improve **scan accuracy** and to **record maxilomandibular relationship** for the fabrication of a complete arch.

With the CAPS System we can finally close the Circle of **Digital Workflow** for a Complete Arch.

CAPS heights

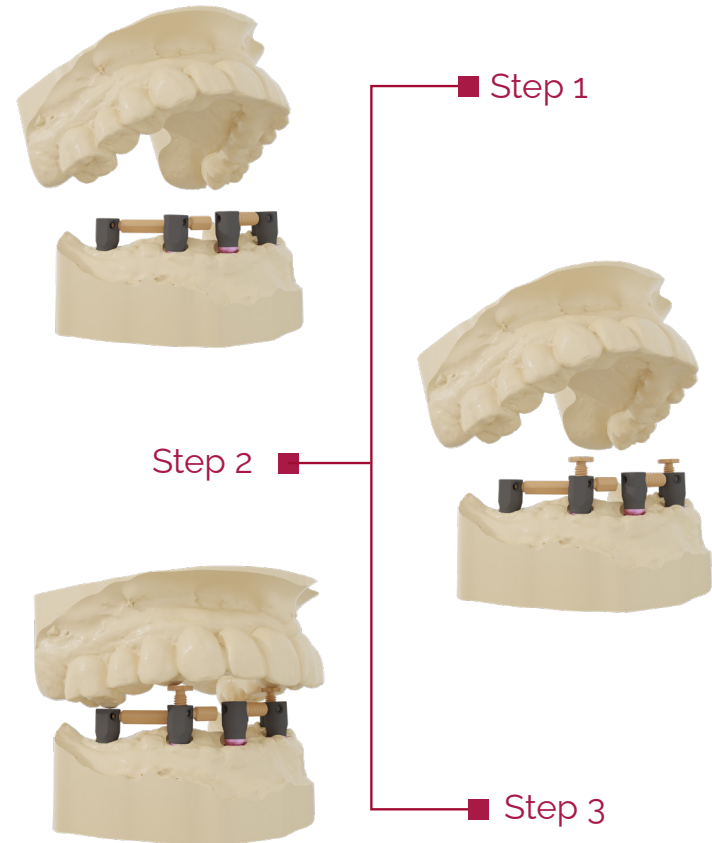
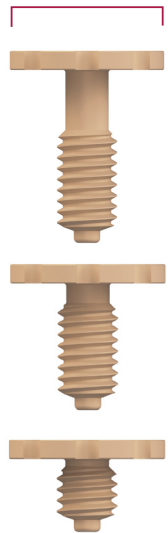
REGULAR CAPS

4,8 mm



WIDE CAPS

6,5 mm



INTERNAL MULTI-UNIT

The Multi-Unit (MU) abutment has been carefully designed to rehabilitate partially or fully edentulous arches, as well as individual.

Available in different gingival heights

Maximum diameter of the MU is 4 mm.
By being narrower it avoids contact with the bone



Similar color to the gingiva
for perfect adaptation/
integration

Concave design facilitates healing
and soft tissue adaptation

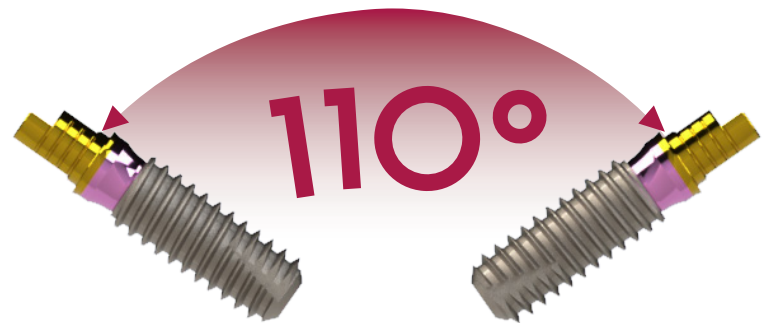


2 mm

3 mm

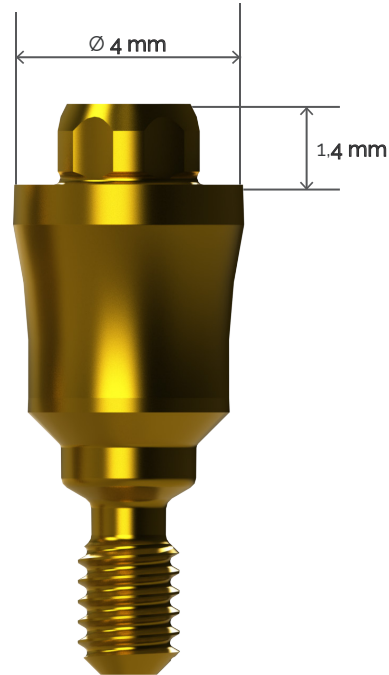
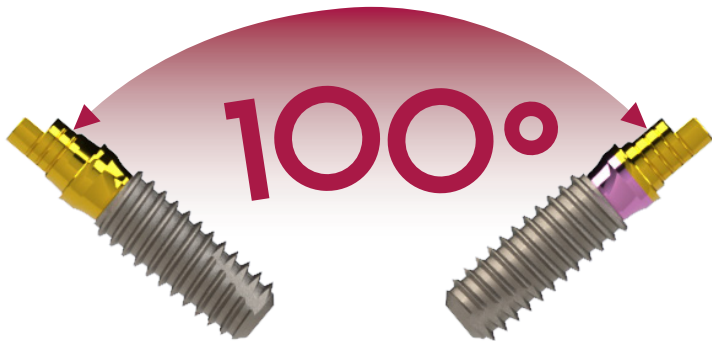
4 mm

**Divergence between
implants: 110°**



DAS MU & INTERNAL DAS MU

Using DAS MU in combination
with INTERNAL DAS MU



DAS MU

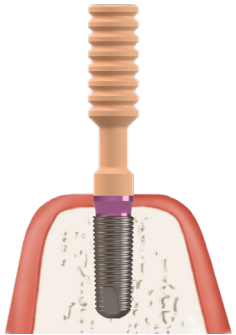
1 mm 2 mm 3 mm 4 mm



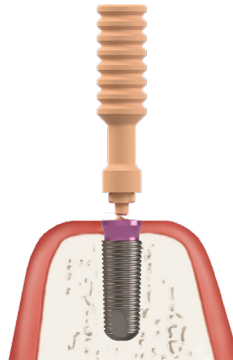
INTERNAL DAS MU

2 mm 3 mm 4 mm

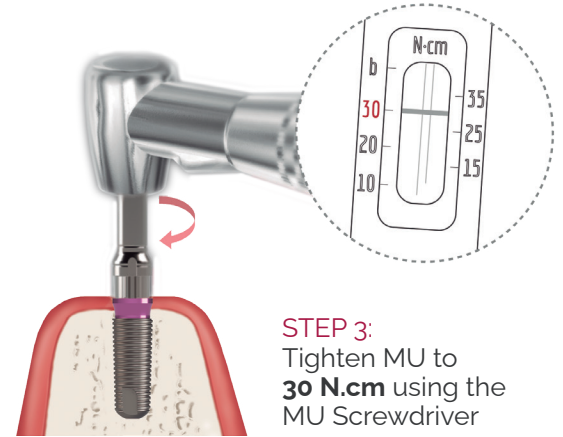
MU INSERTION PROCEDURE



STEP 1:
Use the plastic gripping tool to attach the MU to the implant

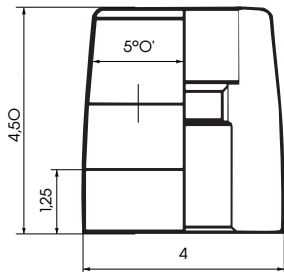


STEP 2:
Remove the plastic tool

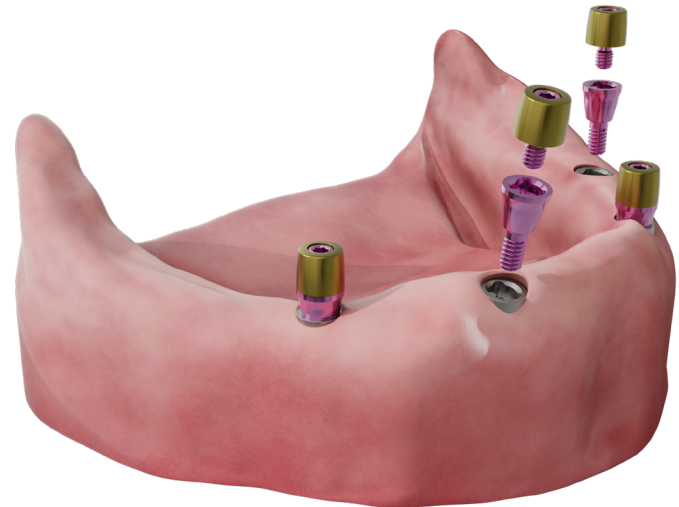


STEP 3:
Tighten MU to **30 N.cm** using the MU Screwdriver

MU HEALING CAPS

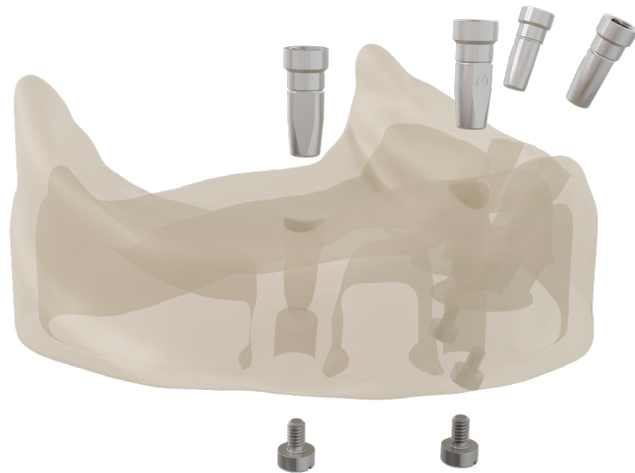


HEALING CAP REGULAR



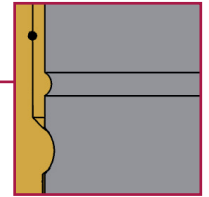
DIGITAL ANALOG

Digital analog of the dental implant to simulate implant position in a 3D printed dental model.



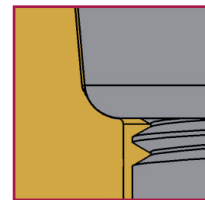
Concave notch

Top precision in longitudinal position



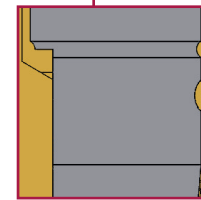
Screwed fastening

Prevents the analog from moving in Z



Curved surface

Accuracy of orientation guaranteed



Longitudinal cut

Longitudinal cut to avoid rotation X-Y

DYNAMIC TIBASE

TO CORRECT ANGULATION



Connection slot

The window is oriented at 0° with respect to the slot



TIBASE
TYPE A
NR=ENGAGING

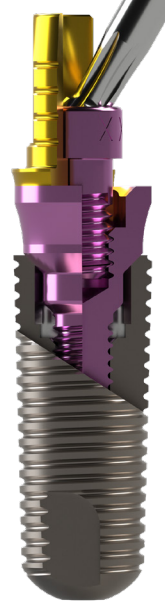
Connection slot

The window is oriented at 180° with respect to the slot



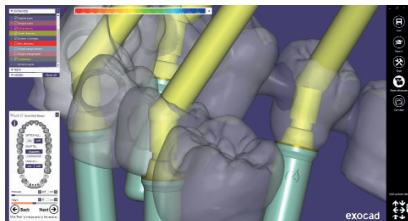
TIBASE
TYPE B
NR=ENGAGING

TIBASE
R=NON ENGAGING



Angulated Screw Channel

CAD DESIGN



3shape

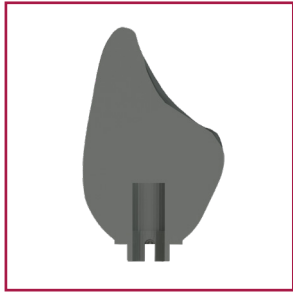
exocad

dental wings

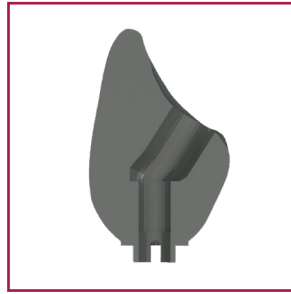
Internal DAS Multi-Unit system allows to change the MU in the library **without rescanning or redesigning** the case. That eases the lab and clinic work, as technician can change the MU without the need to make a new appointment with the patient to re-scan.

If we make a NR case, the option of changing MU is not allowed in the design.

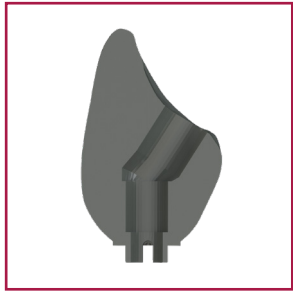
DIRECT TO IMPLANT ONE PIECE



Step 1
Crown with
pre drill



Step 2
Crown with
angled channel

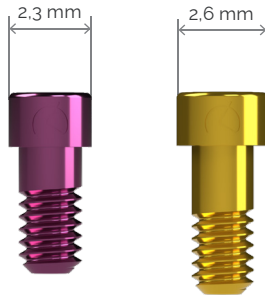
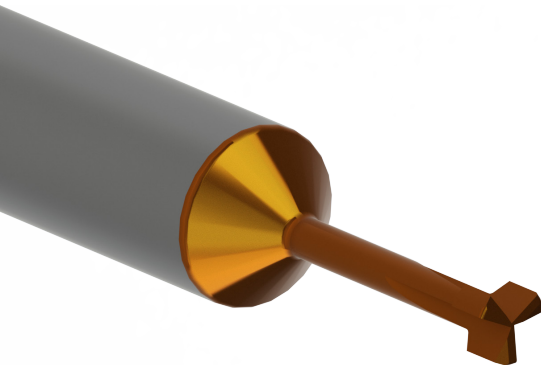


Step 3
DMTone
Crown with Dynamic Milling
Tool. Milling the screw seat and
increasing the diameter of the
straight channel



Final restorations 0-35°
Direct to implant libraries available R/NR
R = Non engaging | NR = Engaging

DMTONE DYNAMIC MILLING TOOL



Dynamic screw Provisional (temporary) Dynamic screw

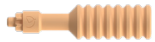
Greater seating
thickness

Greater contact
surface between the
screw and the material
for greater safety in
soft materials



Provisional (temporary) restorations up to 35°
Provisional (temporary) direct to implant libraries available R/NR
R = Non engaging | NR = Engaging

INTERNAL DAS MU SYSTEM COMPONENTS



Ratchet
49.409.000.02-2



Screwdriver
43.321.320.01-2



Digital Analog
34.312.210.01-2



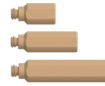
Digital Analog Positioner
49.309.000.01-2



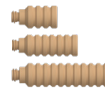
Dynamic Screwdriver
43.618.201.01-2 (18 mm)
43.624.201.01-2 (24 mm)
43.632.201.01-2 (32 mm)



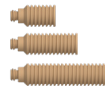
MU DMTone
33.390.716.01-2 Shank Ø3
33.490.716.01-2 Shank Ø4
33.690.716.01-2 Shank Ø6



Peek Pins
TYPE A
49.414.000.01-2 (6 mm)
49.415.000.01-2 (9 mm)
49.416.000.01-2 (13 mm)



TYPE B
49.414.000.02-2 (6 mm)
49.415.000.02-2 (9 mm)
49.416.000.02-2 (13 mm)



TYPE C
49.414.000.03-2 (6 mm)
49.415.000.03-2 (9 mm)
49.416.000.03-2 (13 mm)



TYPE D
49.416.000.04-2 (13 mm)



TYPE E
49.416.000.05-2 (13 mm)



CAPS
Regular
49.418.000.01-2 (3,8 mm)
49.419.000.01-2 (6 mm)
49.420.000.01-2 (8 mm)



Wide
49.418.000.02-2 (3,8 mm)
49.419.000.02-2 (6 mm)
49.420.000.02-2 (8 mm)



Reference Scanbody
Engaging
54.312.210.31-2



Non-engaging
54.322.210.31-2



Healing Cap
Regular
40.318.003.89-2.



MU Dynamic TiBase
Type A Engaging
31.312.210.01-2



Type B Engaging
31.313.210.01-2



Non-engaging
31.322.210.01-2



Dynamic Screw
41.318.050.01-2



Provisional (temporary) Dynamic Screw
41.318.057.01-2

Contact Us Today



info@dynamicdentalsolutions.co.uk



dynamicdentalsolutions.co.uk



+44 (0) 1444 870583



Dynamic Dental
SOLUTIONS